

AXIOM PRODUCT CODE: 3KNTC
 SIZE: 125 x 60 x 6mm THICK POST END CAP.
 4N° ECS SCREWS ARE SUPPLIED WITH THIS PRODUCT.

AXIOM PRODUCT CODE: ARN HANDRAIL

AXIOM PRODUCT CODE: MANG
 INLINE HANDRAIL CONNECTOR FOR THE ARN HANDRAIL.

AXIOM PRODUCT CODE: ARNWP
 SIZE: 60 x 42 x 6mm THICK WALL PLATE.
 4N° FV12-50 SCREWS ARE SUPPLIED WITH THIS PRODUCT.

AXIOM PRODUCT CODE: 3KNP
 SIZE: 125 x 60mm POST.

GRADE A SAFETY GLASS IN ACCORDANCE WITH AS1288

AXIOM PRODUCT CODE: AKS.

AXIOM PRODUCT CODE: AIA INFILL

AXIOM PRODUCT CODE: FV10-45
 SIZE: 50mm x 10 GAUGE, QUAD THREAD, SQUARE DRIVE, COUNTERSUNK HEAD, STAINLESS STEEL SCREW.

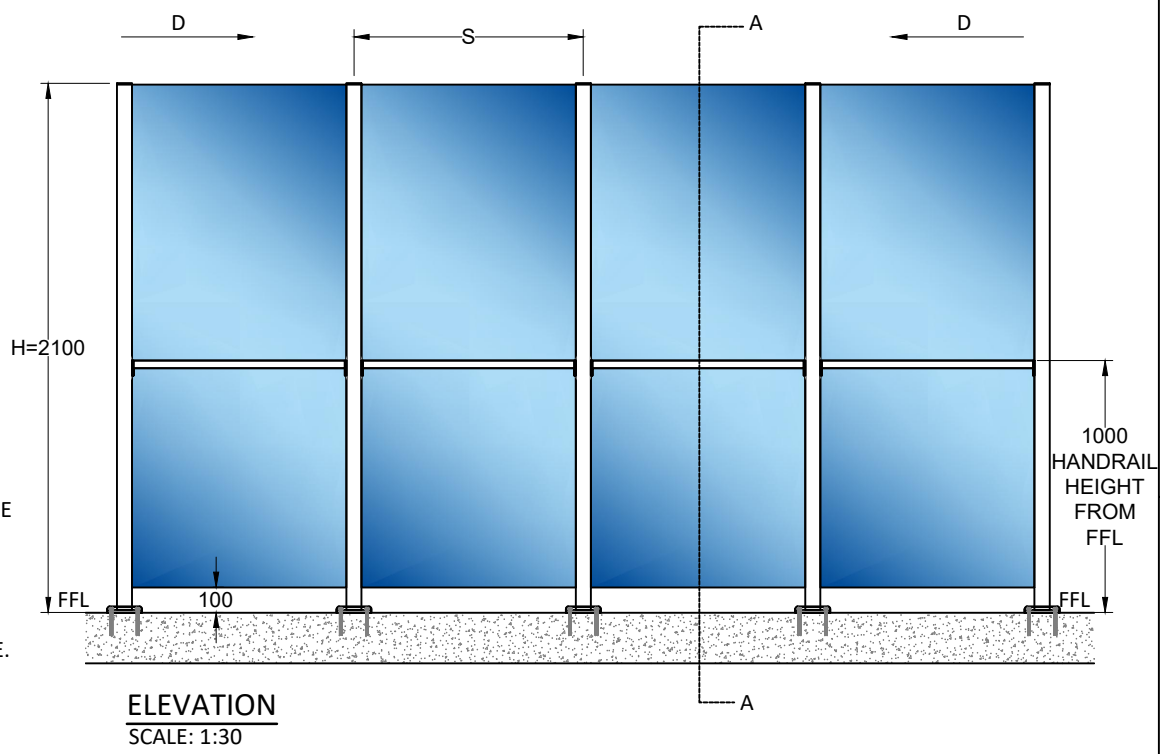
AXIOM PRODUCT CODE: 3KNBPC BASE PLATE COVER.
 SIZE: 145mm x 145mm x 35mm HIGH.

AXIOM PRODUCT CODE: 3KNBP BASE PLATE.
 SIZE: 135mm x 135mm X 16mm THICK.

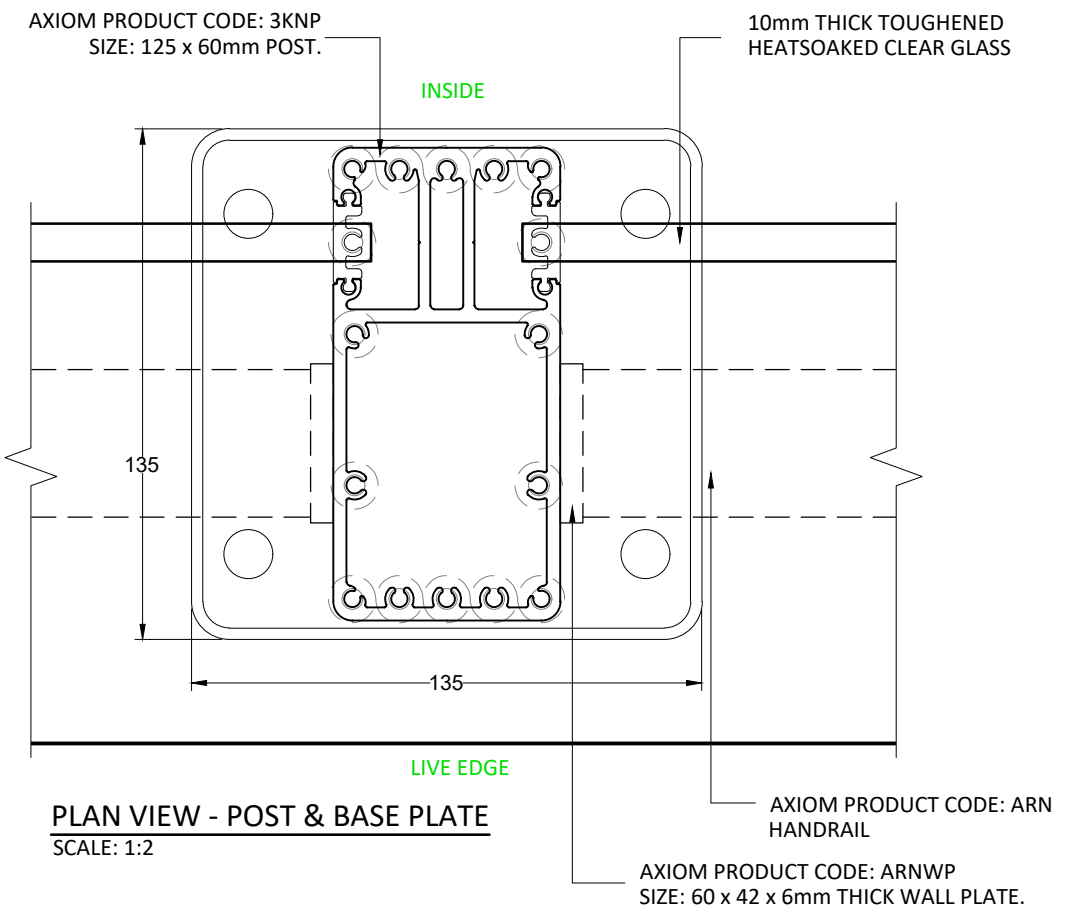
FIXING ANCHOR (TBC)

LIVE EDGE

SECTION A-A
 SCALE: 1:2



ELEVATION
 SCALE: 1:30



PLAN VIEW - POST & BASE PLATE
 SCALE: 1:2

DO NOT MANUFACTURE SUBJECT TO ENGINEERING APPROVAL

- NOTES:
- REFER TO AXIOM DRAWING GN-01 FOR GENERAL & INSTALLATION NOTES.
 - ALL DIMENSIONS ARE IN MM
 - INSTALLER MUST CHECK THIS DRAWING COMPILES WITH ALL CONSTRUCTION DRAWINGS REFER GN01 NOTE 6.
 - ALL HANDRAILS AND/OR POSTS MUST BE ADEQUATELY FIXED AT THE ENDS OF THE RUN TO PERMANENT STRUCTURE REFER GN01 NOTE 16
 - ANCHORS TO BE CHEMSET REO 502 + CHEMSET ANCHOR STUDS A4/316 . REFER TO GENERAL NOTES SHEET FOR FIXING DETAILS AND PROCEDURES.
 - CONCRETE HOB/SLAB SHOULD HAVE MIN. 32 Mpa. CONCRETE HOB WITHOUT ANY COLD-JOINT WITHIN 300mm DISTANCE OF BALUSTRADE ANCHORS IN ALL DIRECTIONS
 - CONCRETE HOB/SLAB (GLOBAL BEHAVIOR PLUS LOCAL FAILURE AT ANCHOR LOCATION) TO BE CHECKED BY OTHERS FOR LOADS FROM BALUSTRADE LOADING TABLE
 - IT IS THE RESPONSIBILITY OF THE INSTALLER TO ENSURE ALL EDGES OF LAMINATED GLASS ARE SEALED TO PREVENT WATER EGRESS OR DELAMINATION
 - NOISE DUE TO WIND VARIES BASED ON LOCATION AND BUILDING CONFIGURATION. RISK OF NOISE DEPENDS ON SEVERAL FACTORS THAN THE BALUSTRADE ALONE AND IS THEREFORE NEITHER CONSIDERED IN THE DESIGN NOR IN AXIOM'S SCOPE. WHERE EXPOSURE TO HIGH WINDS MAY OCCUR, A WIND/ ACOUSTIC ENGINEER MUST DETERMINE IF WIND TUNNEL TESTING AND/ OR CONTROL MEASURE IS NECESSARY TO MITIGATE WIND NOISE. IT IS HIGHLY RECOMMENDED TO COVER THE OPENING HOLLOW SECTIONS OF BALUSTRADE TO REDUCE THE RISK OF WIND NOISE.

REVISIONS:

CLIENT:
 AXIOM

PROJECT:
 SUITE DRAWINGS FOR GUARDIAN SUITE



PROPRIETARY AND CONFIDENTIAL
 THIS DRAWING REMAINS IN THE SOLE PROPERTY OF AXIOM GROUP INVESTMENTS Pty Ltd. IT MUST NOT BE REPRODUCED IN PART OR IN WHOLE WITHOUT CONSENT FROM THE DIRECTORS. AXIOM RESERVES THE RIGHT TO AMEND DRAWINGS IN THE INTEREST OF CONTINUOUS IMPROVEMENT.

DRAWING TITLE:
 CHILDCARE 3KNP BASE PLATE 2100H

DRAWING NO.: SD30-03	CHECKED BY:	
SHEET NO.: 1 OF 1	DRAWN BY:	JB