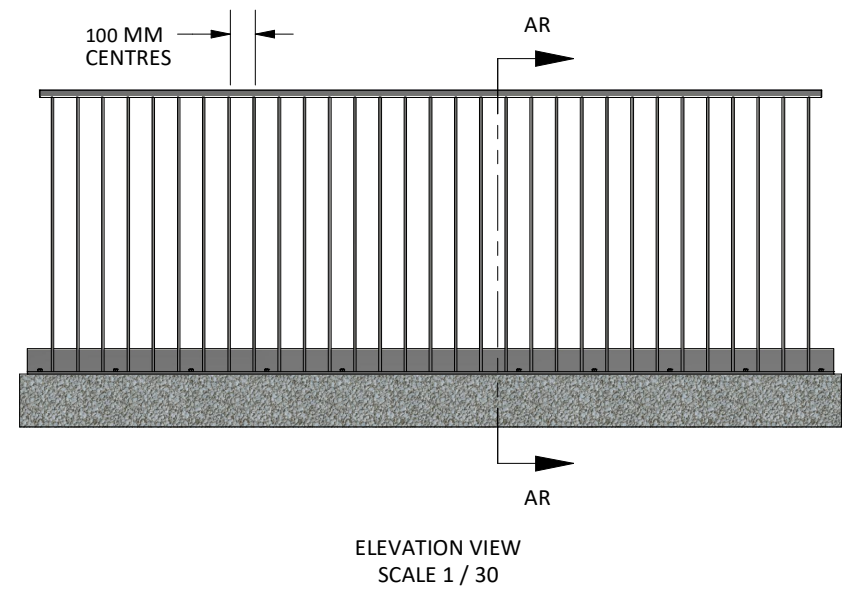
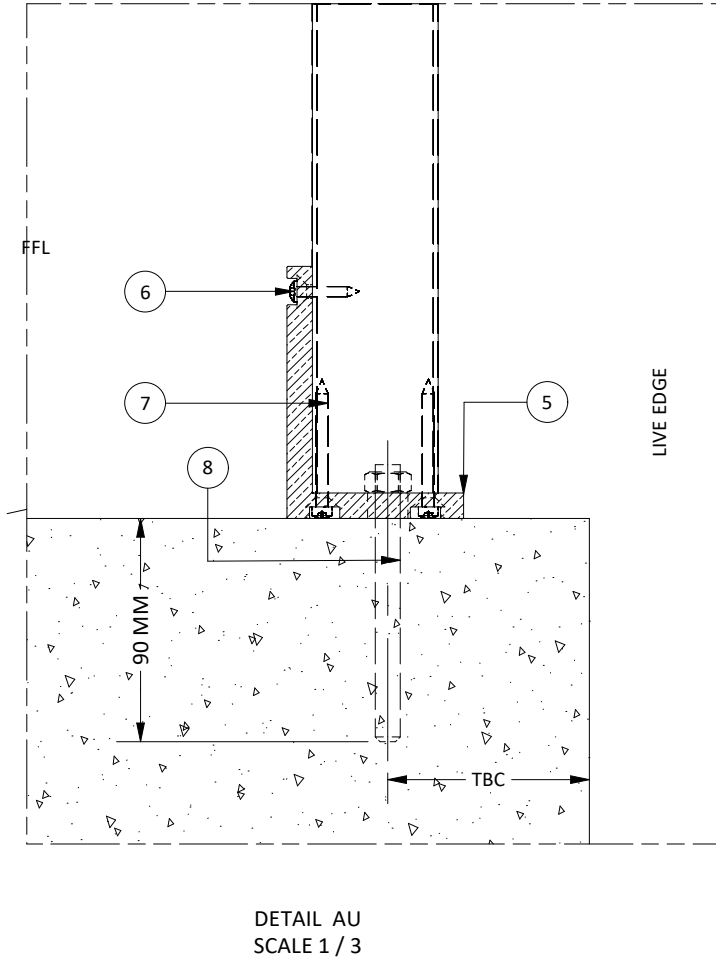
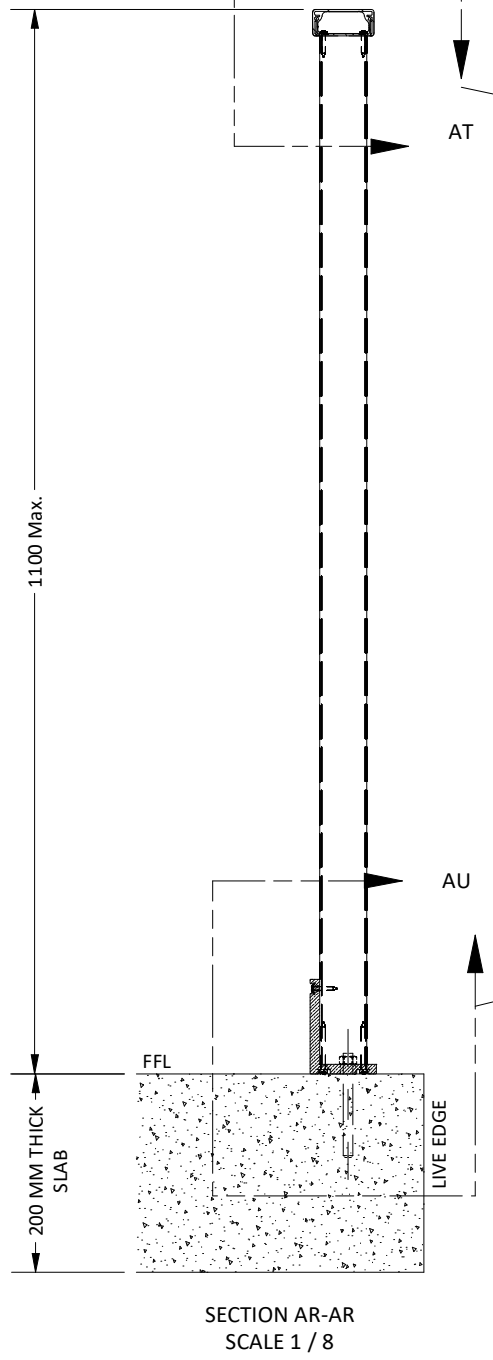
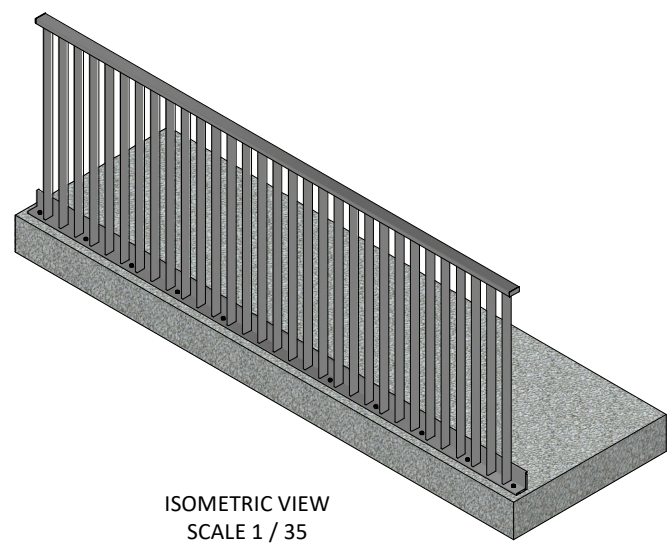
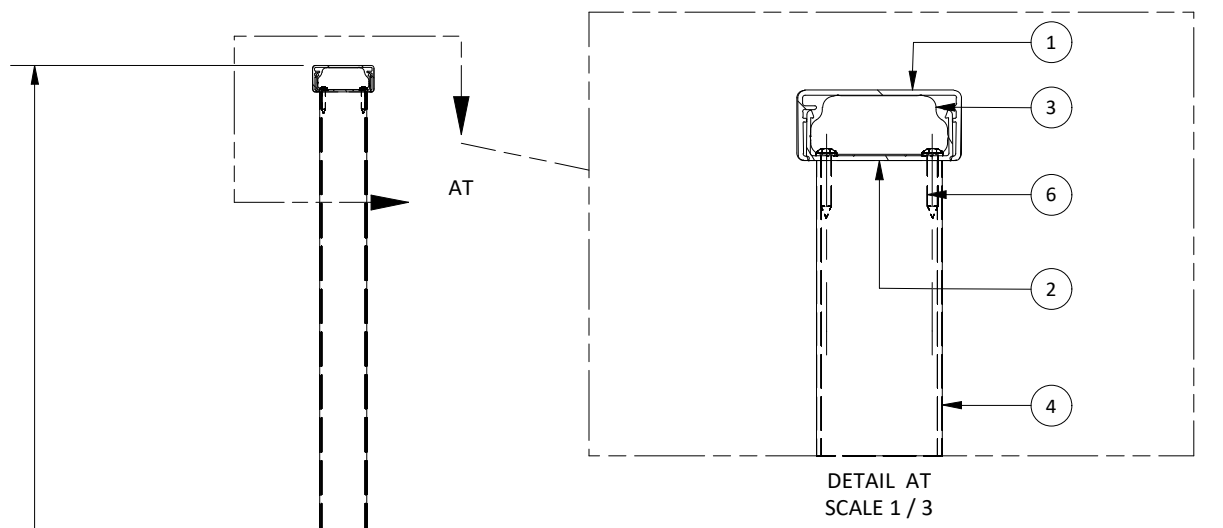


PARTS LIST			
ITEM	PART NUMBER	DESCRIPTION	MATERIAL
1	6528RH	HANDRAIL 65mm x 28mm	ALUMINUM 6106 T6
2	AXDPUC	UNDERCAP FOR THE AXDP4 HANDRAIL 58mm x 20mm	ALUMINUM 6106 T6
3	6528EC	HANDRAIL END CAP 65.3mm x 27.9mm	ALUMINUM 6106 T6
4	LF2	BALUSTER 50 x 10mm	ALUMINUM 6060 T5
5	LFLB	BASE L- SECTION 100mm x 70mm x 6.2m LONG	ALUMINUM 6106 T6
6	BRSCS	25mm THREAD LENGTH x 10 GAUGE, WITH A 8 GAUGE PAN HEAD SQUARE DRIVE, STAINLESS STEEL SCREW	STAINLESS STEEL
7	FV1045PH	SCREWS.2N 10G x 50mm S/S SCREWS PER BALUSTER	STAINLESS STEEL
8	FIXING ANCHOR	M10 RAMSET ANCHOR OR GRADE A4-70 THREADED ROD+RAMSET REO 502@300 MM	STAINLESS STEEL
9	SLAB	32 MPA	CONCRETE

- AXIOM ALFM FACE MOUNTED CHANNEL FIXED TO SLAB EDGE WITH 2N° M10 CHEMSET A4 / 316 STAINLESS STEEL ANCHORS VERTICALLY ABOVE EACH OTHER AND AT EACH END, THEN AT 300MM MAXIMUM CENTRES BETWEEN 90MM MIN. EMBEDMENT AND 50MM MIN. EDGE DISTANCE. STAINLESS STEEL ANCHORS TO BE FIXED WITH CHEMSET 800 SERIES EPOXY OR EQUIVALENT, WITH N32 MINIMUM GRADE OF CONCRETE.
- EACH LF2 BALUSTER TO BE FIXED TO BASE CHANNEL (ALFM) WITH 2N° 10G X 50MM LONG S/S SCREWS (GRADE 410). THESE MUST BE AXIOM PRODUCT CODE: FV1045 AND 1N° 10G X 28MM S/S SCREW (GRADE 410), THESE MUST BE AXIOM PRODUCT CODE: BRSCS
- AXDPUC INNER RAIL TO BE FIXED TO EACH BALUSTER WITH 2NO 10G X 50MM LONG STAINLESS STEEL SCREWS, (GRADE 410). THESE MUST BE AXIOM PRODUCT CODE: 1045.
- CONCRETE SLAB (AND ANY HOB IF DRAWN) TO BE VERIFIED BY PROJECT ENGINEER AS STRUCTURALLY SUITABLE TO SAFELY SUPPORT BALUSTRADE LOADS.
- DESIGNED FOR C3 CLASSIFICATION BARRIER IN ACCORDANCE WITH AS1170.1 DESIGNED HORIZONTAL LIVE LOAD = 0.75KN/M DESIGNED INFILL LIVE LOAD = 1.0 KPA
- DESIGNED FOR WIND IN ACCORDANCE WITH AS1170.2 (REFER TO TABLE)
- N/A
- ALL ALUMINIUM TO BE 6106 T6 GRADE U.N.O. ALL FIXINGS TO BE A4 / 316 STAINLESS STEEL U.N.O.
- TOP OF HANDRAIL TO BE 1200MM MIN. FROM FFL.
- WHEN AXIOM PRODUCTS ARE CONCEALED OR IN CONTACT WITH SCREED, TILE BED OR ANY ITEMS THAT COULD CAUSE CORROSION, IT IS THE INSTALLERS RESPONSIBILITY ADEQUATELY PROTECT AXIOM PRODUCTS TO PREVENT ANY CORROSION.
- IT IS THE INSTALLERS RESPONSIBILITY TO ENSURE THAT ANY DISSIMILAR METALS ARE KEPT SEPARATED. AXIOM GROUP RECOMMENDS THE USE OF NYLON WASHERS TO KEEP DISSIMILAR METALS SEPARATED.
- READ THIS DRAWING IN CONJUNCTION WITH THE RELEVANT ENGINEERING DRAWINGS. ALL PRODUCTS MUST BE INSTALLED AS SPECIFIED BY THE ENGINEER.
- AXIOM ADVISED TO CARRY OUT A COMPLETE SITE SURVEY TO CONFIRM THIS BALUSTRADE WILL FIT ON SITE, AND NO CHANGES HAVE BEEN MADE DURING CONSTRUCTION
- IT IS THE INSTALLERS RESPONSIBILITY TO ENSURE THAT THIS DESIGN AND SET OUT WILL NOT CLASH OR INTERFERE WITH ANY POST TENSION LINES OR REINFORCEMENT IN THE CONCRETE SLAB. AXIOM WILL NOT BE HELD RESPONSIBLE FOR ANY DAMAGE HOWEVER CAUSED TO THE BUILDING STRUCTURE.
- AXIOM GROUP INVESTMENTS PTY LTD RECOMMEND THAT THIS DESIGN IS APPROVED BY THE RELEVANT BUILDING SURVEYOR (RBS) RELATED TO THIS PROJECT. ONCE THIS DESIGN HAS BEEN APPROVED BY OUR CLIENT AXIOM GROUP INVESTMENTS PTY LTD WILL NOT BE HELD RESPONSIBLE FOR ANY COSTS FROM ANY INSPECTIONS AND OR REPORTS FROM THE RBS RELATING TO THIS DESIGN

- NOTES :**
- N/A
 - ELEVATIONS ARE FOR ILLUSTRATION PURPOSE ONLY. DO NOT USE ELEVATION DRAWINGS FOR MATERIAL ORDERING.
 - N/A
 - N/A
 - CHANNEL TO FULLY BEAR HARD ON CONCRETE, FULL LENGTH, PACK HARD WITH NON SHRINK GROUT AS REQUIRED.
 - HANDRAIL JOINING:
 - THE HANDRAIL MUST BE IN ONE CONTINUOUS LENGTH IF THE STRAIGHT RUN OF BALUSTRADE IS MADE UP FROM TWO PANELS OR LESS.
 - IF THE STRAIGHT RUN OF BALUSTRADE HAS MORE THAN THREE PANELS THAT MAKE UP THE OVERALL LENGTH REQUIRED, ANY CUT LENGTH OF HANDRAIL MUST BE NO LESS THAN 1.5 TIMES THE LENGTH OF THE INDIVIDUAL PANEL WIDTH. HANDRAIL MUST BE JOINED IN THE CENTRE OF AN INDIVIDUAL PANEL.



BARRIER CLASSIFICATION			
LOADING CASE (ULS)	BENDING MOMENT (M *)	SHEAR FORCE (V *)	DIRECTION
	KN.M/M	KN./M	
BARRIER			(-)
WIND			(+)

NOTE: LOADS ARE APPLIED ON THE CONNECTION POINT TO THE CONCRETE.

REVISIONS:

B

REV	ISSUE	DATE :
C	UPDATE BASE DESIGN	03-04-2024

CLIENT :

TITLE :



PROPRIETARY AND CONFIDENTIAL
THIS DRAWING REMAINS IN THE SOLE PROPERTY OF AXIOM GROUP INVESTMENTS Pty Ltd. IT MUST NOT BE REPRODUCED IN PART OR IN WHOLE WITHOUT CONSENT FROM THE DIRECTORS. AXIOM RESERVES THE RIGHT TO AMEND DRAWINGS IN THE INTEREST OF CONTINUOUS IMPROVEMENT.

DRAWING TITLE :
"SD10-03" LYNFIELD SUITE

DRAWING NO.: SD10-03	CHECKED BY :	HB
SHEET NO.: 1	DRAWN BY :	MJY