

Axiom Project Portfolio

Balustrade
Specialists

Axiom are Australia's expert consultants and suppliers of architectural balustrade systems to leading architects, installers and builders in the industry.



OVERVIEW

Access to Axiom's range of product suites has never been easier. With fast, next day delivery, our best-sellers are available off-the-shelf and ready to go. That's the same quality Axiom products, in a fraction of the time.

Balustrade Systems

Privacy Screens & Louvres

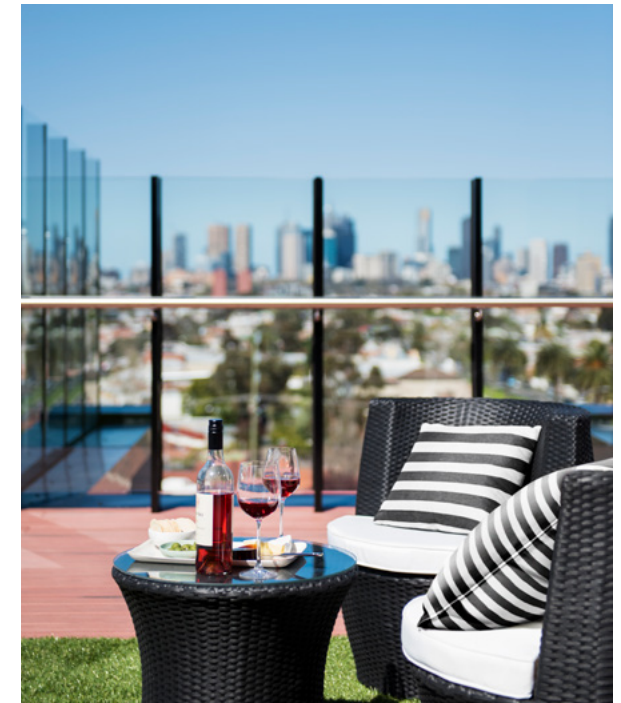
Glass Panels

Pool Fencing



Magnolia Apartments
Hepburn, Victoria

Ettaro Apartments
East Brunswick, Victoria



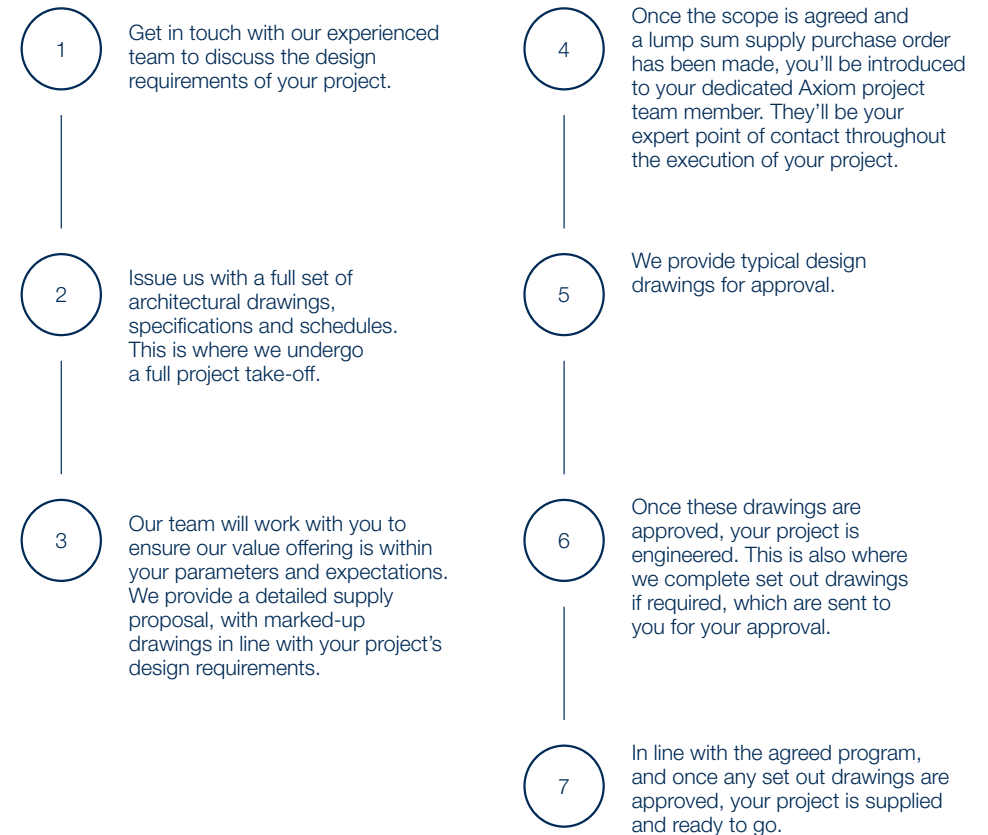
Put engineering first.
Partner with Axiom,
the balustrade experts.

MISSION

At Axiom, our mission is to continually develop new balustrade systems and tools, empowering every balustrade contractor to reduce risk, save time and improve their profitability.

PROCESS

Following is our guide to partnering with Axiom, ensuring your project is expertly designed, engineered and supplied to the highest standard.



VICTORIA

Elm & Stone, Docklands

PRODUCT

AXIOM AFG35 &
AFGAHR handrail

ADDRESS

387 Docklands Drive,
Docklands, VIC

ARCHITECT

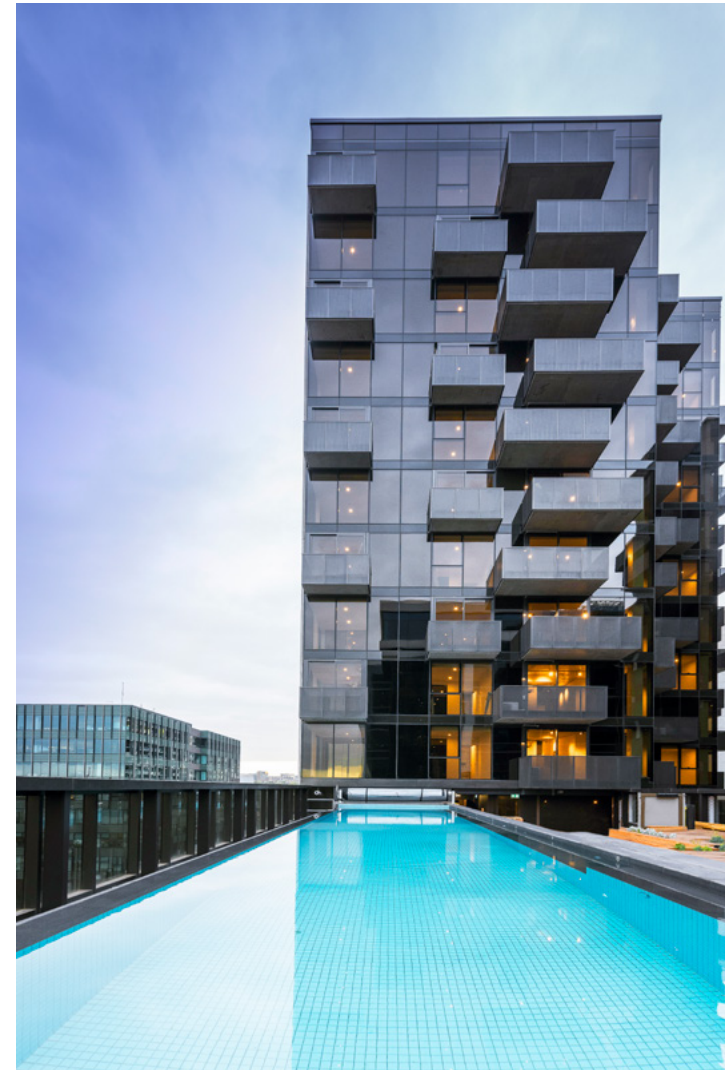
DKO

BUILDER

Built

Elm & Stone is designed by award-winning architects DKO in collaboration with MAB Corporation which Axiom was proud to be part of with the design, engineering and delivery of the balustrades to this project.

Incorporating the Axiom AFG35 slim-line front glazed post, free-floating mesh sheets with the AFGAHR handrail, the balustrade design and practicability is a truly vital part in achieving the design intent for the façade we were briefed on at the outset.



VICTORIA

Sky Garden, Glen Waverley

PRODUCT

AXIOM
Paramount System

ADDRESS

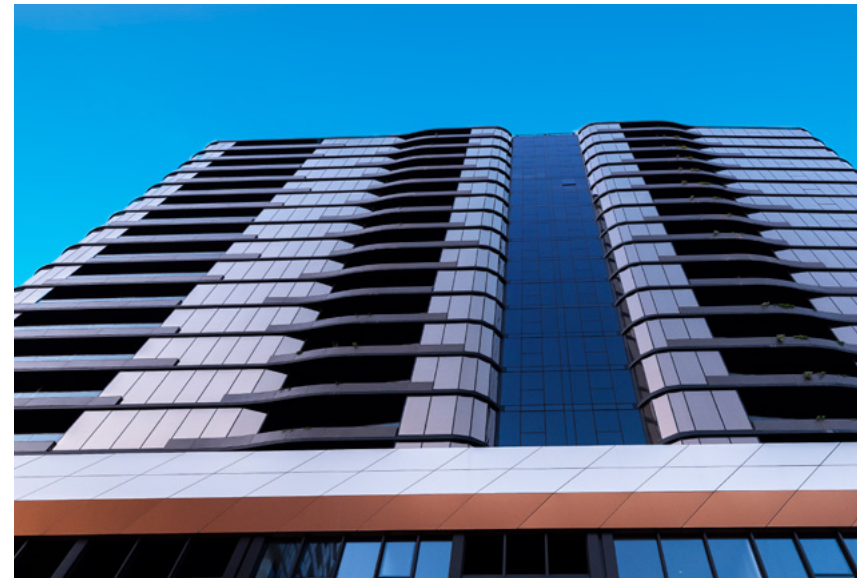
235 Springvale Road,
Glen Waverley, VIC

ARCHITECT

Rothelowman
/ DKO Architecture

Rothelowman, one of Australia's most respected architectural studios has showcased the Axiom Balustrades yet again and, has created a true landmark address, heralding a new era for this rapidly evolving and coveted part of Melbourne's east.

This luxury project utilised our Paramount frameless wall-mounted balustrade system mounted to the parapet walls, offering a seamless look.



VICTORIA

Montague Square, South Melbourne

PRODUCT

AXIOM Lynfield
balustrades

ADDRESS

134–142 Ferrars Street,
South Melbourne, VIC

ARCHITECT

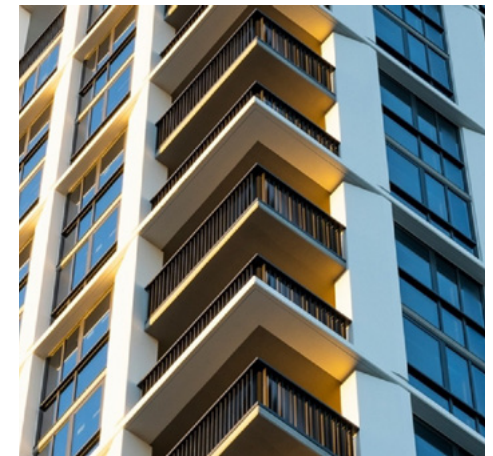
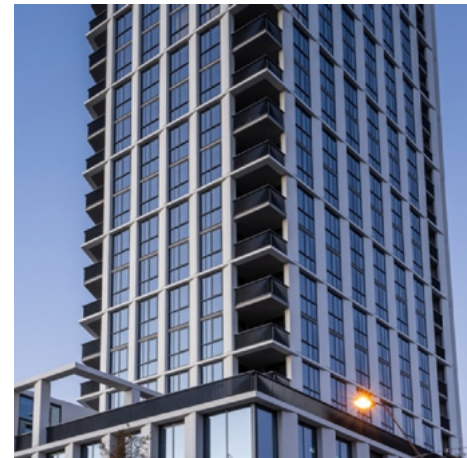
Rothelowman

BUILDER

Element Five

Montague Square has breathtaking views of Melbourne CBD skyline, showcasing the engineered Axiom Lynfield balustrades.

Axiom collaborated closely with Rothelowman to design and engineer a bespoke Lynfield balustrade system to seamlessly integrate with the rest of the façade envelope.



NEW SOUTH WALES

Harbourfront Apartments, Balmain

PRODUCT

AXIOM Lynfield
balustrades

PROJECT

100–102 Elliott Street,
Balmain, NSW

ARCHITECT

Bates Smart

BUILDER

Toga Group

This \$181 million completed building project has one hundred and twenty one apartments across eight buildings between three and five-storeys high.

For this building project, Axiom manufactured and supplied the Lynfield balustrade system. This balustrade suite is a truly unique baluster style. It is a fully cantilevered and fully engineered system that requires no vertical posts. Our balustrade suites that use our Lynfield range are well sought-after because of their sleek design and straight-forward installation.



NEW SOUTH WALES

Aqualuna, Milsons Point

PRODUCT
AXIOM Smartglaze

PROJECT
30 Alfred Street,
Milsons Point, NSW

ARCHITECT
Koichi Takada
Architects

BUILDER
Ceerose

Aqualuna is a boutique eight-storey building in iconic Milsons Point comprised of 63-apartments and five retail tenancies.

Each residence has been carefully crafted by globally-renowned architect, Koichi Takada and associates. The building features a unique wave-like façade featuring the Axiom Smartglaze balustrade suite, allowing optimum views of the beautiful Sydney harbour.



AUSTRALIAN CAPITAL TERRITORY

Sapphire Apartments, Kingston

PRODUCT

AXIOM Smartglaze
AXIOM Panorama
AXIOM Paramount
AXIOM Vectro Screens

PROJECT

45 Honeysett View,
Kingston ACT

ARCHITECT

May and Russell
Architects

BUILDER

BLOC

Kingston Foreshore is one of Canberra's most popular places to live and visit. Sapphire combines the fabulous location with unbeatable views to have the best of both worlds, made possible by using a wide range of Axiom balustrades to set this building apart from its neighbours!

Axiom supplied Smartglaze, Panorama, Paramount & Vectro Screens.



QUEENSLAND

Coronation Drive Refurb, Brisbane

PRODUCT

AXIOM Defender

ADDRESS

159 Coronation Drive,
Brisbane, QLD

ARCHITECT

Fender Katsalidis

Axiom supplied the Defender range to this prestige refurbishment in the heart of Brisbane. The Axiom Defender range is designed to meet a load of 3KN off a base plated balustrade.

The Defender range is the ideal product suite where high balustrade loads are required, and aesthetic appeal is paramount.

The Axiom team was pleased to work through both these requirements with Fender Katsalidis to ensure neither was compromised.



WESTERN AUSTRALIA

Treehouse Apartments, Jolimont

PRODUCT
AXIOM Neo suite

ADDRESS
18 Hortus Way,
Jolimont, WA

ARCHITECT
MJA studio

Due to its prestige's location, a special glass balustrade system was the requirement from leading Perth consultants, Axiom's Spectra system was the ideal choice!

In the heart of one of Perth's hidden parkland treasures, Treehouse is an exclusive retreat from today's urban chaos, but still just around the corner from Cambridge Street's bustling café, retail and shopping strip.



SOUTH AUSTRALIA

EI8HT South Esplanade, Glenelg

PRODUCT

AXIOM Smartglaze
dry glaze frameless
Balustrade Suite

ADDRESS

8 South Esplanade,
Glenelg, SA

ARCHITECT

Chase Crown

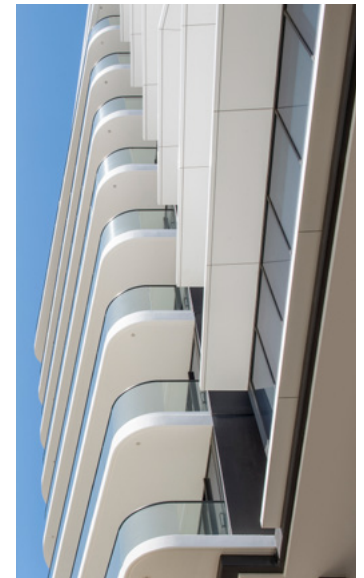
BUILDER

Watpac

Axiom was proud to be part of this stunning development on the beach front of Glenelg.

Axiom supplied a complete packaged balustrade to one of South Australia's leading façade companies, product supplied was the Axiom Smartglaze System, 12mm toughened glass with the Axiom ARN handrail.

We were able to meet the clients architectural vision by providing both curved and straight balustrades to form an integral design element of this unique project.



SOUTH AUSTRALIA

Kodo Apartments, Adelaide

PRODUCT

AXIOM Luna
Balustrade Suite

ADDRESS

29 Angas Street,
Adelaide, SA

ARCHITECT

Woods Bagot

BUILDER

Watpac

This 30-storey building is slated to be the tallest residential tower in Adelaide.

Axiom was proud to design, engineer, and supply the complete balustrade system. Incorporating folded 4mm powder coated aluminium sheet adapter and 10mm clear toughened heat soaked glass within our Luna balustrade suite.





You know what you're getting when you purchase an Axiom System. All of our product ranges are manufactured to Australian standards, reducing risk and increasing longevity. For those projects that require a little extra attention, we offer custom architectural and engineering solutions to suit.



Customised
Certification



Bespoke
Architectural
Solutions



Manufactured
to Australian
Standards



Product
of Australia

**Simply delivering
complex designs.**

1300 652 336
sales@axiomgroup.com.au
axiomgroup.com.au