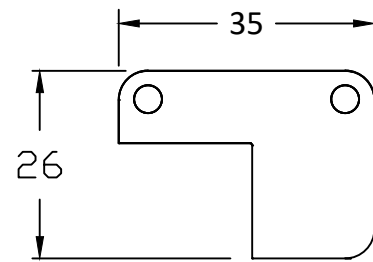
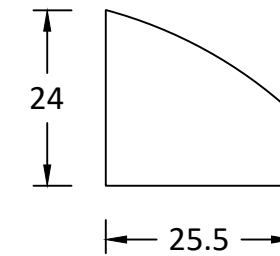
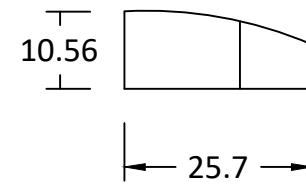


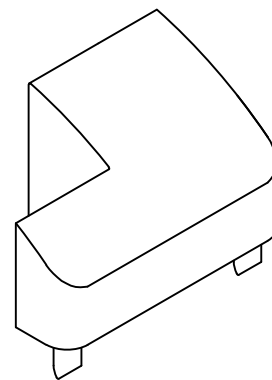
Plan



Side elevation




Isometric view



Axiom product code: ACFGR-35

Right hand cast top cap for the AFG-35 post. Specify this cap for AFG-35 end posts when the glass extends the top of the post.

	Project: Axiom product drawing	Scale: 1:1 @ A3	Drawing N°: APD6-29	Checked by: HM	Alloy / grade of aluminium: 6106 T6	Proprietary and Confidential This drawing remains the sole property of the Axiom Group investments Pty Ltd. It must not be reproduced in part or in whole without written consent from the Directors. Axiom reserves the right to amend drawings in the interest of continuous improvement.
	Client: Axiom Group Pty Ltd	Paper size: A3	Drawn by: CRR	Date: 1 / 8 / 15	This drawing has been produced in AutoCAD LT 2015.	
	Title: Axiom semi frameless balustrade suite. Specification of Axiom product code: ACFGR-35 Right hand post cap.	Unless otherwise stated all dimensions are in MM.	Revision:			